

# Lacté

The Milk Masters

*Solo*  
Electric Breastpump

Register your warranty online at  
[www.go-lacte.com](http://www.go-lacte.com)



All parts of Lacté are BPA free

**GMTA Asia Sdn Bhd**

12, Jalan TK2/1C, Taman Kinrara, Seksyen 2, 47100 Puchong, Selangor, Malaysia  
Tel: +603-8080 5262 Email: [info@gmta.asia](mailto:info@gmta.asia) Website: [www.go-lacte.com](http://www.go-lacte.com)



# Congratulations!

Thank you for choosing Lacté Solo Electric Breastpump. It has been known that breastmilk is the best natural food for your baby. With our collaboration with the breastfeeding experts and research with the lovely breastfeeding mothers who are determine to give the best to their babies, just like you, Lacté fulfils the breastfeeding mothers' needs where the circumstances do not make breastfeeding possible. Milking made easy.

Lacté Solo Electric Breastpump - Unrivalled features at its price point

- Unique Soft Breast Shield design, reacting to the pumping rhythm which mimic baby's suckling, for maximum comfort and stimulation.
- Closed System with Anti-backflow.
- 2 Phase Expression- Stimulation Phase & Expression Phase.
- 5 Steps Suction Control.
- Easy to read LED indicator.
- Compact and light weight for maximum portability.
- Silent operation.
- Powered by A/C Adaptor or Battery (4x AA batteries).

## **Intended use**

Lacté Solo Electric Breastpump is used to express milk from the breasts of lactating women. The Breastpump may be used to relieve engorgement, a painful condition whereby the breasts are overfull, possibly preventing a proper latch by the infant. A Breastpump may also be used in the event if an infant does not latch properly for direct breastfeeding and the mother still desires the benefits of breast milk.

# Table of contents

Congratulations	i
Intended Use	i
Important safety information	1
Product description	2
Preparing the pump	3
Expression	5
Storing and Thawing Breastmilk	6
Cleaning	7
Troubleshooting	8
Technical Data	9
Warranty	9

# Important safety information

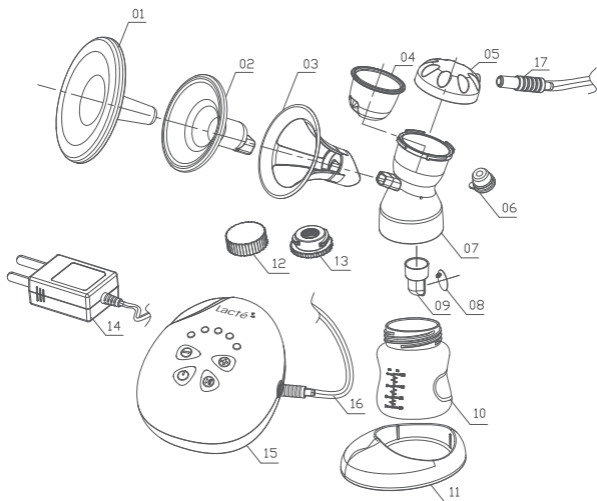
Failure to follow these instructions/ safety information can lead to danger from the device.

- Unplug the AC adapter from wall socket outlet when the pump is not in use
- Do not leave Solo Electric Breastpump unattended when plugged into a power source
- Keep the device dry and do not immerse in water
- Do not reach for an electrical device if it has fallen into water. Unplug immediately.
- Repairs must be conducted by authorised service agencies

## **Warning**

- This is a single user product. Use by more than one person may present a health risk
- Supervision is required when the Solo Electric Breastpump is used in the vicinity of children
- Use the Solo Electric Breastpump only for its intended use as described in this manual
- Do not use the Solo Electric Breastpump while sleeping or overly drowsy
- Do not operate the Solo Electric Breastpump if it is physically damaged or abused
- Do not place the Solo Electric Breastpump near any appliances generating a strong magnetic field.
- Do not place the Solo Electric Breastpump under direct sunlight

## Product description



01 Dust Cover	X1	10 120ml Wide neck Bottle	X1
02 Breast Shield	X1	11 Bottle Stand	X1
03 Breast Shield Frame	X1	12 Bottle Lid	X1
04 Diaphragm	X1	13 Bottle Adapter	X1
05 Cap	X1	14 Power Adapter	X1
06 Cap Plug	X1	15 Main Pump Unit	X1
07 Main Breast Shield Body	X1	16 Tubing	X1
08 Valve Membrane	X1	17 Tube Connector	X2
09 Valve Body	X1		

## Preparing the pump

### Warning

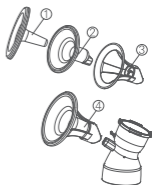
ONLY USE THE POWER ADAPTER SUPPLIED WITH THE Solo ELECTRIC BREASTPUMP  
MAKE SURE THE POWER ADAPTER IS COMPATIBLE WITH THE POWER SOURCE

Before each use, sterilise all parts that have direct contact with breast milk:  
Bottle, Breast Shield, Breast Shield Frame, Diaphragm, Cap, Cap Plug, Breast  
Shield Body, Valve Membrane and Valve Body

### Assembling Expression collection Kit

#### 1. Assembling the Breast Shield

Slot in the ② Breast Shield into ③ Breast Shield Frame and then slot in the ① Dust Cover to form the complete ④ Breast Shield Combo. Then fasten the ④ Breast Shield Combo into the Main Breast Shield Body as illustrated and make sure they are firmly engaged.



#### 2. Assembling the Diaphragm

Place the Diaphragm into Main Breast Shield Body and follow by the Cap onto it as illustrated. Make sure the Cap Plug is plugged into the hole at the Cap and the Cap is tightened securely.

#### 3. Assembling the Valve

Place the Membrane onto Valve Body by pressing the Membrane into the installation hole as illustrated. Make sure the membrane is seated flat and tight with no visible gap. Mount the Valve Body to the Main Breast Shield Body securely as illustrated.



#### 4. Assembling the Bottle and Bottle Stand

Screw the bottle into the connector at the Main Breast Shield Body and place it on the Bottle Stand.

## Connecting Expression collection Kit and Main Pump Unit



### Connecting Tubing

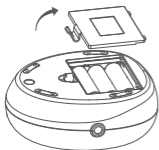
Connect one end of the Tubing to Expression collection Kit and the other end to the Main Pump Unit as illustrated.

### Connecting to Power Source

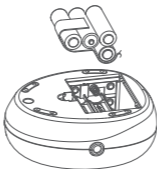
Plug the AC Adapter into the wall socket outlet. Attach the Power Cord to Main Pump Unit as illustrated.



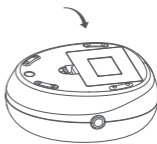
### Using 4AA Alkaline Batteries (not included)



Pic 1



Pic 2



Pic 3

Open the Battery Cover as shown in Pic 1. Insert 4 new AA Alkaline Batteries in the correct position as illustrated in Pic 2. The batteries should be placed above on the silk ribbon. To remove the batteries, pull the ribbon. Close and snap the battery cover as shown in Pic 3.

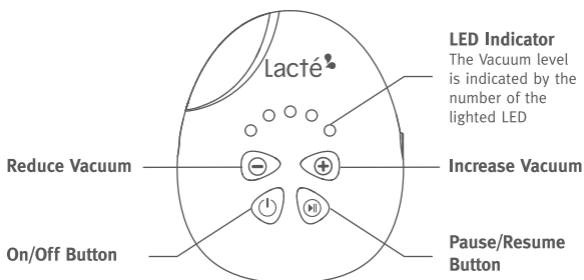
### CAUTIONS

Always replace all 4 AA Batteries at the same time.

Remove all batteries if you are not going to use the breast pump for a period of time.

# Expression

## Control Panel Description



### Useful tips:

Vacuum Level 1 & 2	[ Stimulation Phase ]
Vacuum Level 3, 4 & 5	[ Expression Phase ]

- Place the breast shield over your breast so that your nipple is properly centered in the tunnel.
- While the pump unit is connected to power source, press the On/Off Button to switch on. The 30 minutes timer will start and the pump will begin with the Stimulation Phase at Level 1 vacuum (1 lighted LED) for 2 minutes before entering into the Expression Phase at level 3 vacuum (factory default).
- If you wish to increase the vacuum level during the Stimulation Phase, press + Button once to level 2 (2 lighted LED). Pressing + Button again will switch to Expression Phase at level 3. By default, the pump will automatically switch to Expression Phase after 2 minutes.
- If your milk starts to flow earlier, press the + Button to switch to Expression Phase at level 3 (3 lighted LED). Make sure the milk is following into the bottle properly.

- Adjust the vacuum level during pumping to your comfort level by pressing the + Button or – Button. Comfort vacuum: Use the + to increase the vacuum until it is slightly unpleasant. Then press – to reduce minimally.
- Press the Pause/Resume Button to toggle between pause and resume.
- If 30 minutes cycle expired, all LED lights will be off, and go into standby mode.

## Storing and Thawing Breastmilk

You should store and thaw your breastmilk correctly. This is the only way you can be sure that all the important nutrients are preserved and bacterial contamination is minimised.

Guidelines for storing / thawing breastmilk

Lacte recommends using the following guidelines for storing and thawing breastmilk. For Healthy Term Babies.

	Freshly expressed breastmilk	Thawed breastmilk (previously frozen)
Room temperature	Do not store at room temperature	Do not store
Refrigerator	3 - 5 days at approx. 4°C	10 hours
Refrigerator freezer compartment	6 months at approx. -16°C	Do not refreeze after thawing!
Freezer	12 months at approx. -18°C	Do not refreeze after thawing!

### Tips for freezing/thawing breastmilk:

- Never fill bottles/bags more than full to allow space for possible expansion.
- Label the bottle/bag with the date you expressed the milk.
- Do not store breastmilk in the refrigerator door. Store it in the lower back area of the refrigerator, where the temperature is coolest.
- Thaw frozen breastmilk in the refrigerator overnight or hold the bottle or bag under running warm water (max. 37° C).
- Shake the bottle or bag gently to blend any fat that has separated.
- Do not thaw frozen breastmilk in a microwave oven or in a pan of boiling water (danger of burning).

## Cleaning

Before using your Lacte Solo Electric Breastpump, disassemble, wash and sterilise all parts of the Expression Collection Combo kit.

- Do NOT sterilise tubing or tubing adapter
- Completely air-dry or towel-dry before reassembly for next use.

Partially dry components may affect the operation of your Electric Breastpump. Please ensure that all parts are completely dry before use.

### **Before Each Use:**

- Wash your hands thoroughly with soap and warm water before handling the Expression Collection Combo Kit, the Electric Breastpump or any other attachments.
- Make sure the Expression Collection Combo Kit is cleaned, sterilised and dried.
- Ensure the tubing is free from any liquid. Do NOT operate your Lacté Solo Electric Breastpump if any liquid is visible in the tubing. (See Tubing Cleaning Instructions on page 8.)

### **General Cleaning Instructions:**

- Set aside the tubing and tubing connector. Under the normal working conditions of the pump, the diaphragm would prevent the back-flow of milk. Therefore, these items do not need to be washed. In case of finding any liquid or liquid vapor inside the tubing, follow the Tubing Cleaning Instruction carefully before use.
- All parts of the Expression Collection Combo Kit may be cleaned in the upper compartment of your dishwasher or hand washed with dish soap in hot water.
- Do NOT use solvents or abrasives.
- Rinse with hot, clean water.
- To clean the Electric Pump Base, wipe the Base with a damp cloth, using only water or water mixed with a mild soap

### **Tubing Cleaning Instructions:**

- Wipe the outside of the tubing with a clean, damp cloth. Avoid getting water or other fluids inside the tubing.
- If liquids are found inside tubing, rinse the tubing with clean hot water. Hang to AIR DRY COMPLETELY BEFORE USING. Do NOT insert any object into tubing.

Note: Before each use, visually inspect the individual components for cracks, chips, tears, discoloration or deterioration; as they may affect the efficiency of the Lacté Solo Electric Breastpump. In the event that damage to the device is observed, please discontinue use until the parts have been replaced.

## **Troubleshooting**

### **If there is low or no suction**

- Check all connections if they are all properly attached at all connection points.
- Check the valve membrane if it is seated securely and flat on the valve body.
- Hold the breastshield, not the connector or bottle, while expressing.
- Ensure the breastshield forms a complete seal around the breast.
- There should not be any water in the tubing.
- All components must be completely dry

### **The pump becomes wet**

- Unplug the mains adapter from the socket.
- Switch off the pump
- Do not place the pump upside down. Control panel must point upwards.
- Store the pump in a dry, warm place for 24 hours.

Note:

Do not expose the pump to direct sunlight.

Do not accelerate the drying process by use of heat.

### **The pump does not switch on**

- Check if the power chord is properly attached to the pump
- Check if the wall socket outlet is turned on
- Contact your Lacté dealer or the store where you bought the pump

## Technical Data

• Model	SPo1
• Power Adapter	
Power Input	100-240V~ 50/60HZ
Power Output	DC 6V / 1A
• Power Rating	4W
• Stimulation Speed	100T / min;
• Stimulating Pressure	Max -0.018MPa, 2 levels vacuum
• Expression Speed	26 ~ 48T / min,
• Expression Pressure	Max -0.034MPa, 3 levels vacuum
• Timer	30 minutes
• Overall Noise	≤ 60dB(A)
• Operating Conditions	5~40°C, RH ≤ 90%
• Electric Shock Protection	AC adapter Class II, Host machine Class III

## Warranty

The Lacté Solo Electric Breastpump ("Product") is warranted to the original user — whether institutional or individual ("First User") — only. From the date of the First User's purchase of this product, GMTA Asia Sdn. Bhd. ("GMTA") warrants the Product to the First User against defects in material or workmanship for a period of one year for the pump mechanism.

GMTA's sole obligation under this limited warranty shall be to repair or replace, at GMTA's option, any Product that is determined to be defective by GMTA and determined to be covered by this express limited warranty. Repair or replacement under this limited warranty is the sole and exclusive remedy of the First User. Proof of purchase in the form of a receipted invoice or bill of sale evidencing that the Product is within the warranty period must be presented to obtain warranty service. This limited warranty is extended by GMTA ONLY to the First User and is not assignable or transferable.

EXCEPT TO THE EXTENT PROHIBITED BY APPLICABLE LAW, ANY IMPLIED WARRANTY OF MERCHANTABILITY OR FITNESS FOR A PARTICULAR PURPOSE ON THE PRODUCT IS HEREBY DISCLAIMED. GMTA SHALL NOT BE LIABLE FOR ANY INCIDENTAL, CONSEQUENTIAL, SPECIAL OR PUNITIVE DAMAGES OF ANY KIND FOR BREACH OF THE EXPRESS LIMITED WARRANTY ON THE PRODUCT OR ANY WARRANTY IMPLIED BY OPERATION OF LAW. OTHER THAN THE EXPRESS LIMITED WARRANTY SET FORTH ABOVE, THERE ARE NO OTHER WARRANTIES THAT ACCOMPANY THIS PRODUCT AND ANY ORAL, WRITTEN OR ANY OTHER REPRESENTATION OF ANY KIND IS HEREBY DISCLAIMED.

### Non-Applicability of Warranty

In addition to any other limitations on the warranty discussed above, the warranty shall expire and be of no force or effect upon the occurrence of any of the following:

- the cause of damage to the Product is due to improper handling or use.
- the Product is not properly maintained by the First User as determined by GMTA.
- non approved accessories or spare parts are used with the Product as determined by GMTA.

If any of the above occurs, GMTA shall not be responsible for damage to the Product, parts thereof or injuries arising therefrom, either directly or indirectly. The warranty terms set forth above replaces all prior warranties with respect to the purchased Product, whether in writing or otherwise.

Call your local distributor or location where you purchased the Product.